

IKV1022S

Inbouwkoelkast

Built-in refrigerator • Einbau-Kühlschrank
Réfrigérateur intégré



NL • Handleiding	4	-	15
EN • User manual	16	-	26
DE • Benutzerhandbuch	27	-	38
FR • Manuel d'utilisation	39	-	51

1 Safety instructions

GENERAL SAFETY INSTRUCTIONS

- **Fully read the instruction manual prior to using the appliance.**
- Carefully store the instruction manual for future reference or subsequent owners.
- Only use this appliance for the purpose described in the instruction manual. This appliance is intended as a built-in device.
- Do not allow children to play or hide inside the appliance - there is a risk of becoming trapped and suffocating.
- Keep the appliance out of reach of children. Children do not see the dangers when handling electrical appliances. Therefore, never allow children to work with electrical appliances without supervision. Keep the appliance and supply cord out of reach of children younger than 8 years of age.
- The manufacturer is not responsible for damage which is caused by improper use or incorrect operation.



Warning: Danger of suffocation!

- Packaging material is dangerous to children. Keep the packaging material out of the reach of children.
- This appliance may be used by children over the age of 8 years old and by persons with reduced physical, sensory or mental capacity or by persons with a lack of experience or knowledge if they are supervised by someone who is responsible for their safety, or have been instructed in how to use the appliance safely and have understood the risks involved in not using it properly.
- Children aged from 3 to 8 years are allowed to load and unload refrigerating appliances.
- Children must not play with the appliance.
- Cleaning and user maintenance must not be performed by children unless they are supervised.
- This appliance is intended to be used in household and similar applications, such as:
 - Staff kitchen areas in shops, offices and other working environments;
 - Farm houses and by clients in hotels, motels and other residential environments;
 - Bed and breakfast type environments;
 - Catering and similar non-retail applications.

- If the safety instructions and warnings are not observed, the manufacturer cannot be held liable for any resulting damage.
- Damage as a result of incorrect connection, incorrect installation or incorrect use does not fall under the warranty.

REFRIGERANT



Caution: Risk of fire

- The refrigerant isobutene R600a is contained within the refrigerant circuit of the appliance, a natural gas with a high level of environmental compatibility, which is nevertheless flammable. During transportation and installation of the appliance, ensure that none of the components of the refrigerant circuit becomes damaged. **WARNING:** Refrigerators contain refrigerant and gases in the insulation. Refrigerant and gases must be disposed of professionally as they may cause eye injuries or ignition. Ensure that tubing of the refrigerant circuit is not damaged prior to disposal.

If the refrigerant circuit should be damaged, avoid open flames and sources of ignition and thoroughly ventilate the room in which the appliance is situated. It is dangerous to alter the specifications or modify this product in any way. Any damage to the power supply cord may cause a short-circuit, fire, and/or electric shock.

SAFETY INSTRUCTIONS FOR INSTALLATION

- The appliance must be handled and installed by two or more persons.
- Wear safety gloves to unpack and install the appliance.
- Only connect the appliance to alternate current, to an earthed mains socket. Make sure that the voltage in your home corresponds with the voltage printed on the type plate of the appliance.
- After unpacking the appliance, make sure that it has not been damaged during transport. If this is the case, do not install the appliance before consulting the dealer of our service department.
- The appliance may only be fitted by a certified installer.
- The electrical connection must meet national and local regulations.

- The connection point, mains socket and mains plug must always be accessible.
- The appliance must always be earthed.
- Do not operate the appliance with an external timer or a separate remote control system.
- Do not locate multiple portable socket-outlets or portable power supplies at the rear of the appliance.

 **Warning: Risk of electric shock**

- Make sure that the power supply cord does not get damaged during installation or is running along sharp edges.
- Be careful not to damage the floor when you move the appliance.
- When moving the appliance, do not lift it or pull it by the door(s).
- Make sure the appliance is not positioned near a heat source.
- Do not place heat generating appliances such as (microwave) ovens above the appliance.
- Make sure that there is sufficient ventilation, leave a space of at least 4 cm at the back of the appliance.

 **Caution:**

Do not damage the refrigerant circuit pipes of the appliance.

 **Caution:**

Keep ventilation openings, in the appliance enclosure or in the built-in structure, clear of obstruction.

- Install the appliance on a firm and stable surface.
- Install the appliance in a dry and well ventilated area. The appliance is intended for operation in environments where ambient temperatures fall within the following ranges, depending on the appliance. The appliance may not work properly if it is left for a long time at a temperature outside the specified range.

Climate class	Ambient temperature
SN	From 10°C to 32°C
N	From 16°C to 32°C
ST	From 18°C to 38°C
T	From 18°C to 43°C

SAFETY INSTRUCTIONS FOR OPERATION

- Only use the refrigerator compartment for storing fresh food and the freezer compartment only for storing frozen food, freezing fresh food and making ice cubes.
- Do not use the appliance outdoors.
- Wait at least three hours before switching the appliance on, to ensure the refrigerant circuit is fully efficient.



Warning:
Risk of fire

- Do not store explosive substances such as aerosol cans or other flammable materials in or near your appliance.
- Do not store glass bottles or containers with liquids in the freezer compartment, since they may break.
- Do not eat ice cubes or ice lollies immediately after taking them out of the freezer, since they may cause frost burns.
- Do not re-freeze frozen goods after they have thawed out. This may cause health issues like food poisoning.

SAFETY INSTRUCTIONS FOR CLEANING AND MAINTENANCE

- Always disconnect the appliance from the mains supply before carrying out any work or maintenance on it.
- Do not use a high-pressure cleaner or steam cleaner to clean the appliance



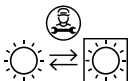
Caution:

- Do not use mechanical devices or other means to accelerate the defrosting process, other than those recommended by the manufacturer.
- Do not use abrasive or harsh cleaners such as window sprays, scouring cleaners, flammable fluids, cleaning waxes, concentrated detergents, bleaches or cleansers containing petroleum products on plastic parts, interior and door lines or gaskets. Do not use paper towels, scouring pads or other harsh cleaning tools.



Warning: Risk of electric shock

- Always carry out regular checks of the appliance and the power supply cord to ensure no damage is evident. Should there be any signs that the appliance or power supply cord is damaged in the slightest degree, contact the customer service department. If the power supply cord is damaged, it must only be replaced by the manufacturer, its service organization agent or similarly qualified persons, in order to prevent hazardous situations. For your own safety, only use the accessories and spare parts from the manufacturer which are suitable for the appliance.



Warning:

- The light source shall be replaced by a certified installer.
- Energy efficiency class: F

INFORMATION ABOUT HOW TO AVOID FOOD CONTAMINATION

To avoid contamination of food, please respect the following instructions:

- Opening the door for long periods can cause significant increase of the temperature in the compartments of the appliance.
- Clean regularly surfaces that come in contact with food and accessible drainage systems.
- Store raw meat and fish in suitable containers in the refrigerator, so that it is not in contact with or drip onto other food.
- Two-star frozen-food compartments are suitable for storing pre-frozen food, storing or making ice cream and making ice cubes
- One-, two- and three-star compartments are not suitable for the freezing of fresh food.

Order	Compartments TYPE	Target storage temp. [°C]	Appropriate food
1	Fridge	+2 ~ +8	Eggs, cooked food, packaged food, fruits and vegetables, dairy products, cakes, drinks and other foods are not suitable for freezing.
2	(***)*-Freezer	≤-18	Seafood (fish, shrimp, shellfish), freshwater aquatic products and meat products (recommended for 3 months, the longer the storage time, the worst the taste and nutrition), suitable for frozen fresh food.
3	***-Freezer	≤-18	Seafood (fish, shrimp, shellfish), freshwater aquatic products and meat products (recommended for 3 months, the longer the storage time, the worst the taste and nutrition), suitable for frozen fresh food.
4	**-Freezer	≤-12	Seafood (fish, shrimp, shellfish), freshwater aquatic products and meat products (recommended for 3 months, the longer the storage time, the worst the taste and nutrition), suitable for frozen fresh food.
5	*-Freezer	≤-6	Seafood (fish, shrimp, shellfish), freshwater aquatic products and meat products (recommended for 3 months, the longer the storage time, the worst the taste and nutrition), suitable for frozen fresh food.
6	0-star	-6 - 0	Fresh pork, beef, fish, chicken, some packaged processed foods, etc.(recommended to eat within the same day, preferably no more than 3 days). Partially encapsulated processed foods (non-freezable foods).
7	Chill	-2 ~ +3	Fresh/ frozen pork, beef, chicken, freshwater aquatic products, etc. (7 days below 0°C and above 0°C is recommended for consumption within that day, preferably no more than 2 days). Seafood (less than 0 for 15 days, it is not recommended to store above 0°C).
8	Fresh food	0 ~ +4	Fresh pork, beef, fish, chicken, cooked food, etc. (recommended to eat within the same day, preferably no more than 3 days).
9	Wine	+5 ~ +20	Red wine, white wine, sparkling wine, etc.

NOTE:

Please store different foods according to the compartments or target storage temperature of your purchased products..

- If the refrigerating appliance is left empty for long periods, switch off. Defrost, clean and dry it and leave the door open to prevent mould developing within the appliance.

Water dispenser cleaning (special for water dispenser products):

- Clean water tanks if they have not been used for 48 h; flush the water system connected to a water supply if water has not been drawn for 5 days.

WARNING

- Food needs to be packed in bags and liquids in bottles or capped containers before putting into the refrigerator to avoid the problem that the inside of the appliance is not easy to clean.

ENVIRONMENTAL PROTECTION

The appliance is energy-efficient. Save even more energy when using the appliance with the following tips, and how to dispose of your appliance in an environmentally-friendly way.

Saving energy

- A high ambient temperature will have a negative effect on the energy consumption. Direct sunlight and other heat sources near the appliance also have a negative effect.
- Keep ventilation holes free. Covered and dirty holes cause a high energy consumption. Ensure sufficient space around the refrigerator, so that a proper ventilation and air flow around the appliance is possible.
- Do not open the doors of the appliance more often than necessary and leave the doors open as briefly as possible.
- The distance between the shelves and the rear wall ensures a free air circulation. Do not place food against the rear wall.
- Set the thermostat to a lower setting if circumstances allow.
- Allow cooked food that you want to store in the appliance to cool down to room temperature before placing it in the appliance.
- A door rubber that does not close properly could increase the energy consumption. Therefore, have it replaced by a qualified person in time.
- If the instructions are not observed, this could lead to a higher energy consumption.

Environmentally-friendly disposal

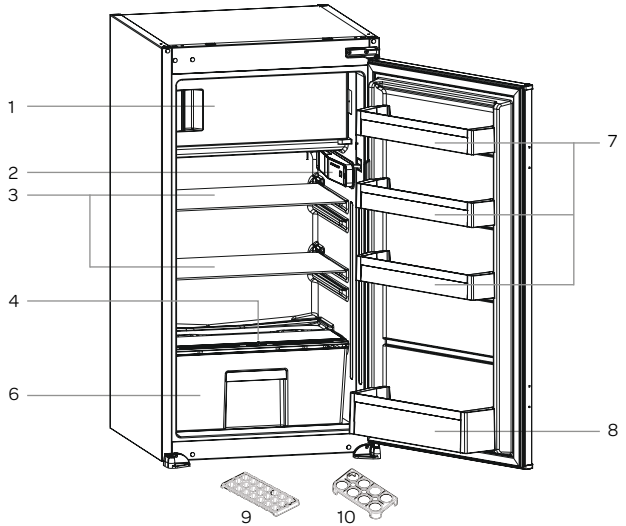


Recycling - WEEE

- Dispose of packaging in an environmentally-friendly manner.
- This appliance is labelled in accordance with European Directive 2012/19/EU concerning used electrical and electronic appliances (waste electrical and electronic equipment - WEEE). The guideline determines the framework for the return and recycling of used appliances as applicable throughout the EU.

2 appliance description

1. Freezer compartment
2. Thermostat with interior light
3. Glass shelves
4. Humidity control
5. Glass shelf on vegetable drawer
6. Vegetable drawer
7. Door compartments
8. Bottle rack
9. Ice cube holder
10. Egg tray



3 before the first use

Leave the appliance to stand for at least 3 hours before you insert the plug into the socket. Otherwise, you may damage the compressor.

Before you use the appliance for the first time, please do as follows: Carefully unpack the appliance and remove all the packaging material. Keep the material (plastic, polystyrene and cardboard) out of reach of children. Check the appliance after unpacking for any damage, possible from transportation. Place the appliance on a flat and stable surface.

The installation procedure is given in the Installation Instructions.

Clean the appliance thoroughly, especially in the interior, before use (see Cleaning & Maintenance).

The installation and electrical connection must be carried out by a qualified technician, in accordance with installation instructions and local regulations.

The appliance must be connected with a properly installed fused socket. The power supply (AC) and voltage at the operating point must correspond with the details on the rating label of the appliance. The rating label is located on the inside left of the appliance.

When the product is plugged in for the first time, the interior lights may turn on 1 minute late due to opening tests.

There can be an odor when you first switch on the appliance. It will disappear after the appliance starts to cool.

First clean the interior of the appliance. Use warm water and a neutral detergent. After cleaning, rinse the interior with clean water and rub dry. Leave the appliance to dry for 1 to 2 hours.

4 how to operate the appliance

SETTING THE TEMPERATURE

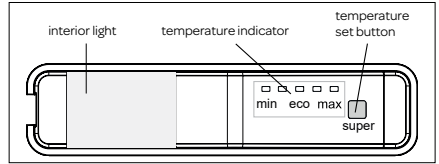
The temperature set button allows you to set the temperature of the appliance.

Use the temperature set button also for activating the super cooling mode.

The appliance will cool continuously until the set temperature has been reached. Allow the appliance to reach the required temperature with no food in the larder. Usually this will take 2 to 3 hours. After that, you can set the required temperature and fill the refrigerator with food.

Repeatedly press the set button until the indicator light of the required temperature lights up.

It may be set to any value ranging from MIN to MAX and **SUPER** mode. As you press temperature set button from MIN to MAX, the temperature decreases.



Humidity control

Selecting the correct humidity means food will not dry out and it can be kept longer.

High humidity		Low humidity	
Slide humidity control to the left		Slide humidity control to the right	
Suitable for products such as:	Vegetables Mushrooms	Suitable for products such as:	Fruit Meat Cheese Butter
Some vegetables and fruit are sensitive to cold and unsuitable for refrigeration. These include:			
<ul style="list-style-type: none"> • pineapple, guava, aubergine, avocado, mango, cucumber, paprika • bananas, olives, tomatoes, passion fruit, potatoes, (water) melon • pomegranate, citrus fruit, pumpkin, courgette 			

SUPER MODE

When can **super freeze** be used?

- To freeze huge quantities of food
- To freeze fast food
- To freeze food quickly
- To store seasonal vegetables properly for a longer period of time

When can **super cool** be used?

- If you want to cool large quantities of food
- If you want to cool food quickly
- If you want to store seasonal vegetables properly for a longer period of time

activating super mode

1. Set the temperature to **MAX** with the set button.
2. Hold down the set button for 5 seconds until all indicator lights light up constantly. The indicator lights remain on during **super mode**.
3. Hold down the set button for 5 seconds to deactivate the **super mode** mode.

NOTE: **super mode** will be cancelled automatically after max. 48 hours.

Attention:

The ambient air temperature, how often the door is opened and the position of the appliance can affect the internal temperature. These factors must be taken into account when setting the thermostat.

- **Never** introduce volatile, inflammable or explosive fluids such as alcohol, acetone or petrol because of the risk of explosion.
- A 5 minute delaying function is applied to prevent damage to the compressor of your appliance, when you take the plug out and then plug it in again to operate it or when an energy breakdown occurs. Your appliance will start to operate normally after 5 minutes.

The freezer compartment, marked with the ******* symbol, is used for storing frozen food and freezing fresh or cooked food. It also allows the making of ice cubes.

STAND-BY MODE

When can the **stand-by mode** be used? If you will not use your appliance for a long time (e.g. in summer holidays). In stand-by mode; all components will be disabled.

activating stand-by mode

1. Set the temperature to **MIN** with the set button.
2. Hold down the set button for 5 seconds until all indicator lights blink three times.
3. If you push the set button while the appliance is in stand-by mode, all indicator lights will blink three times to show **stand-by mode** is active.
4. Push and hold the set button until the display returns to normal working.

DOOR OPEN ALARM

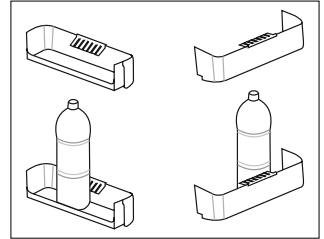
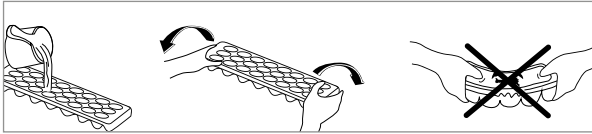
If the door is left open for more than 2 minutes, the interior light will start flashing.

ACCESSORIES

Ice cube holder:

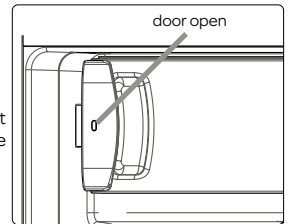
- Fill the ice tray with water and place it in the freezer compartment.
- After the water has completely turned into ice, you can twist the tray as shown below to get the ice cubes out of the tray.

Bottle holder: use the bottle holder to prevent bottles from slipping or falling over..



DOOR OPEN INDICATOR

- On the door of the freezer compartment you can find the **door open indicator**. It indicates whether you have closed the door of the freezer compartment properly.
- If the red indicator is visible, the door is still open.
- If the red indicator is invisible, the door is closed properly.
- Observe that the freezer door should always be kept closed properly. This will prevent food inside the freezer from defrosting; it will avoid heavy ice and frost build-up inside the freezer and an unnecessary increase in energy consumption.



5 food storage in the appliance

COOLING COMPARTMENT

The cooling compartment is used for storing fresh food for a few days.

- Do not place food in direct contact with the rear wall of the cooling compartment. Leave some space around the food to allow the air to circulate.
- Do not place hot food or evaporating liquids in the appliance.
- Never introduce volatile, inflammable or explosive fluids such as alcohol, acetone or petrol because of the risk of explosion.
- Always store food in closed containers or wrapped. To reduce humidity and avoid formation of frost, never place liquids in unsealed containers in the appliance.
- Meat of all types, wrapped in packages, is recommended to be placed on the glass shelf just above the vegetable drawer, where the air is cooler.
- You can put the fruits and vegetables into the vegetable drawer without the packaging.
- To avoid the cold air escaping, try not to open the door too often and not leave the door open for a long time.

FREEZER COMPARTMENT

The freezer compartment is used for freezing fresh foods and for storing frozen foods for the period of time on the packaging and for making ice cubes.

- Do not freeze too large an amount of food at one time; the faster the food is frozen, the longer it preserves its qualities.
- Wrap and seal fresh food properly. The packaging should be air tight and shouldn't leak.

- Place frozen food in the freezer compartment as soon as possible after purchase. Make sure that it doesn't defrost during transport.
- The length of time you can keep food depends very much on the quality of the food.
- Always mark the date and the content on the pack and do not exceed the stated storage time.
- Do not store glass bottles or containers with liquids in the freezer which will freeze. The freezing may cause the bottles to break. Highly carbonated drinks can even explode. Never keep lemonade, fruit juice, beer, wine, champagne, etc. in the freezer compartment.
- Once the food is thawed, it must not be refrozen: you must cook it as quickly as possible in order to consume or to freeze again.

6 cleaning & maintenance

Before cleaning the refrigerator, always unplug the appliance.

Remove all food from the appliance. Clean the interior of the appliance. Use warm soapy water with a neutral cleaning agent to prevent nasty smells. Wipe the inside of the appliance after cleaning with clean water and properly wipe everything dry. Leave the appliance to dry for 1 to 2 hours. The shelves, vegetable drawer and door compartments can be removed from the appliance easily and washed by hand. The components may not be cleaned in the dishwasher.

For areas in the appliance that are difficult to clean, such as small openings or corners, it is recommended wiping them clean regularly with a soft cloth or brush. If necessary, a tool can be used such as thin sticks (cocktail sticks, for example), to make sure no contamination can occur in these areas.

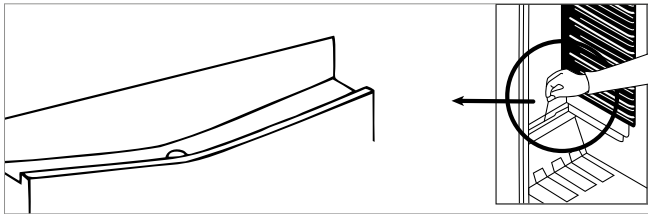
Clean the outside of the appliance and the door gasket with a soft damp cloth.

Clean the rear of the appliance at least one per year with a vacuum cleaner so that the condenser and ventilation holes remain clean and the appliance is able to function as optimal as possible.

Do not use hard brushes, steel wool, abrasives (such as toothpaste), organic solvents (such as alcohol, acetone, oil, etc.), boiling water, acid or alkaline product to clean the appliance, as this could damage the surface and interior of appliance. Boiling water and benzene could deform or damage plastic components.

DEFROSTING THE COOLING COMPARTMENT

The defrosting of the cooling compartment is completely automatic. Droplets of water on the rear wall of the cooling compartment indicate that the periodic automatic defrost cycle is in progress. The defrost water is automatically routed to a drain outlet and into a container from which it evaporates. The drain hole should be cleaned periodically with the defrost drain plug to prevent the water from collecting on the bottom of the appliance instead of flowing out.



DEFROSTING THE FREEZER COMPARTMENT

Defrost the appliance when the layer of ice has reached a thickness of 3 to 5 mm.

Switch off the thermostat and remove the plug from the socket. Remove all food from the appliance.

Store any frozen products on a cool location, packaged in newspapers and blankets.

Place a receptacle under the appliance and wait for the ice to defrost. Defrosting can be accelerated by placing a tray with hot water in the appliance.

Remove ice using a plastic ice scraper.

Warning: Never remove ice with sharp objects, defrosting sprays, a hair dryer, a heater or something similar. This could lead to unsafe situations and cause irreparable damage to the appliance.

REPLACING THE LED LIGHTING

This appliance is equipped with a LED light bulb. It can be used for a long time. In case, the LED bulb is blown, it must be replaced by a qualified person to avoid any hazard. Contact the Inventum service department.

TIPS

- High ambient temperatures have a negative effect on energy use. Keep the appliance in a position away from direct sunlight or other sources of heat.
- Keep ventilation openings free. Clogged openings lead to higher use of energy.
- Try not to open the door too often, especially when the weather is wet and hot. Once you open the door, mind to close it as soon as possible.
- The space between the shelves and the rear wall of the cooling compartment must be unobstructed to allow the cool air to circulate. Therefore don't place any food items against the back.
- Set the thermostat to a lower setting when the circumstances allow it.
- Before storing fresh cooked food, make sure the food has cooled at least to room temperature.
- Ice and frost layer increase energy consumption, so clean the appliance as soon as the layer is 3 to 5 mm thick.
- If the gasket is damaged or if it turns out that the sealing is poor, the energy consumption is substantially higher. To restore efficiency, replace the gasket.
- Keep the condenser on the rear wall always clean, free of dust or any impurities.
- Always consider the instructions, otherwise the energy consumption is substantially higher.
- If you will not use your appliance for a long time (e.g. in summer holidays), activate the stand-by mode. Clean your appliance. Leave the door open to prevent humidity and smell.

7 troubleshooting

If your appliance is not working properly, it may be a minor problem, therefore check the following:

Problem	Cause	Solution
Appliance is not functioning; light does not work	The appliance is not plugged in	Plug the appliance in
	There is a power failure	Check the fuse box
The temperature inside the appliance is too high or too low	The thermostat has been set incorrectly	Set the thermostat correctly
	The door of the appliance is opened too frequently or remains open for too long	Open the door less often and/or reduce the time that the door remains open
	A large amount of warm food has been placed in the appliance in the last 24 hours	Temporarily set the thermostat to a lower position
	The ambient temperature is higher or lower than the temperature indicated in the table with technical data	The appliance is intended for operation in an ambient temperature indicated in the table with technical data supplied with the appliance
	Air circulation vents are blocked	Clean the ventilation openings
The interior light flashes	The door has been open for too long or does not close properly	Check there is nothing between the door that prevents it from closing and close the door.
Water is running out of the appliance	Drain outlet is blocked	Clear the drain outlet with a skewer
The appliance is excessively noisy	Has the appliance been installed correctly?	Check the installation
	The appliance is standing against something	Place the appliance in such a way that it is not standing against anything
The inside light is not working	Lamp is defective	Contact the customer service department

Note: During normal use of the cooling appliance, different types of noises can occur that do not have any effect on the correct operation of the appliance.

Noises that can be heard during normal use of the appliance are caused by the operation of the thermostat, compressor (activation), cooling system (shrinkage and expansion of the material under the influence of temperature differences and flow of cooling liquid).